

# New in Release: Secomea Release 8.3

- This document lists the changes from Release 8.2 to release 8.3

**Version: 1.1, 2018**

---

# Table of Contents

<b>Change log</b>	<b>3</b>
<b>Information</b>	<b>3</b>
<b>Highlights</b>	<b>3</b>
<b>1. GateManager</b>	<b>4</b>
1.1. Support for DNS names in Server Relays and WEB Proxy relays.	4
1.2. Dynamic updated DNS names for Server Relays and WEB Proxy Targets	4
1.3. WEB Proxy – Target Names	6
1.4. Nice to know working with Target Names	7
1.4.1. Server Administrator:	7
1.4.2. Use Local Relay Settings:	7
1.4.3. Timers	7
1.4.4. UNKNOWN HOSTNAME	7
<b>2. LinkManager 8</b>	<b>8</b>
2.1. GUI brush-up	8
2.2. Update of the GoTo Appliance options (GTA)	9
2.2.1. SSH	10
2.3. Nice to know about the new GTA Service	13
<b>3. LinkManager Mobile</b>	<b>14</b>
<b>4. SiteManager</b>	<b>15</b>
4.1. Subnet Agent added to the small SiteManager	15
4.2. SiteManager Embedded extended with 100 relays	15
<b>5. Known limitations</b>	<b>16</b>
5.1. Upgrading/downgrading LinkManager 8	16
5.2. Reinstalling LinkManager 7	16

---

## Change log

Version	Change log
1.0	Initial version
1.1	Minor pre-release edits

## Information

- Overview of the new features and changes in the products
- Products: GateManager, SiteManager, LinkManager8 and LinkManager Mobile
- Release firmware build: **8.3.18404**

## Highlights

- Server Relays now support DNS/hostname.
- Follow-up to Release 8.2: Enhanced GTA services in the LinkManager 8 GUI.
- SiteManager 3G/4G stability update, especially when using International SIM provider.
- SiteManager Embedded with 100 static relays.
- Different enhancements and bugfixes – see Release note 8.3 for a detailed description of bugfixes

# 1. GateManager

New in GateManager updates and fixes.

## 1.1. Support for DNS names in Server Relays and WEB Proxy relays

Note that the alias follow the LDH rule (letters, digits, hyphen) of the DNS standard. This means the characters allowed are consisting of characters a through z, A through Z, digits 0 through 9, and hyphen (case insensitive) and may not start or end with a hyphen.

## 1.2. Dynamic updated DNS names for Server Relays and WEB Proxy Targets

Previously, it was only possible to make a Server Relay to an IP address. With Release 8.3 it is possible to enter a hostname/DNS name. Even with a forced refresh timer, in case the DNS name is dynamically updated.

### Example – NTP Server Relay using DNS name (pool.ntp.org):

The following example show the use of SiteManager as NTP server where the NTP server IP dynamically change over time:

SiteManager Server Relay:

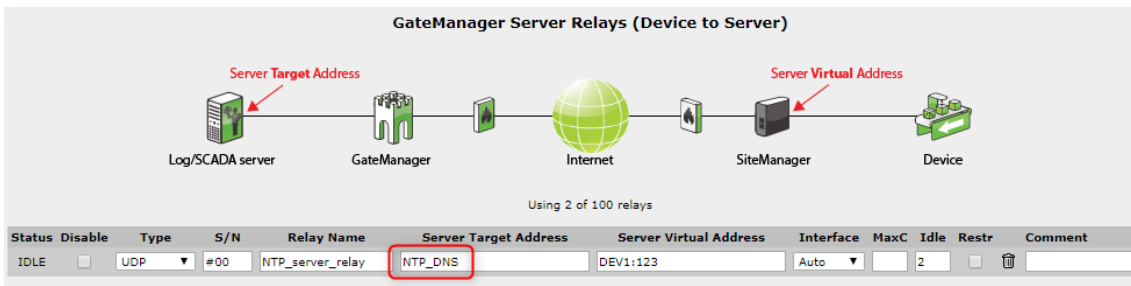


Figure 1 - Create a Server Relay on the SiteManager

On the GateManager, the Device TAB will show if the Target has not been created correctly.

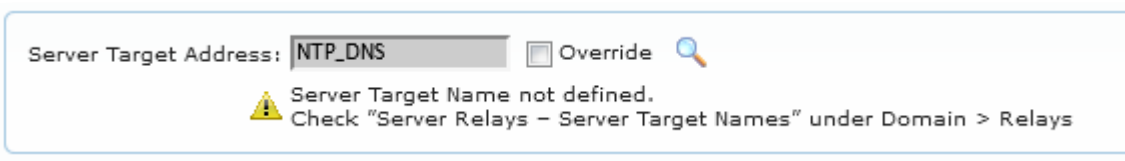


Figure 2 - GateManager report Target is not defined

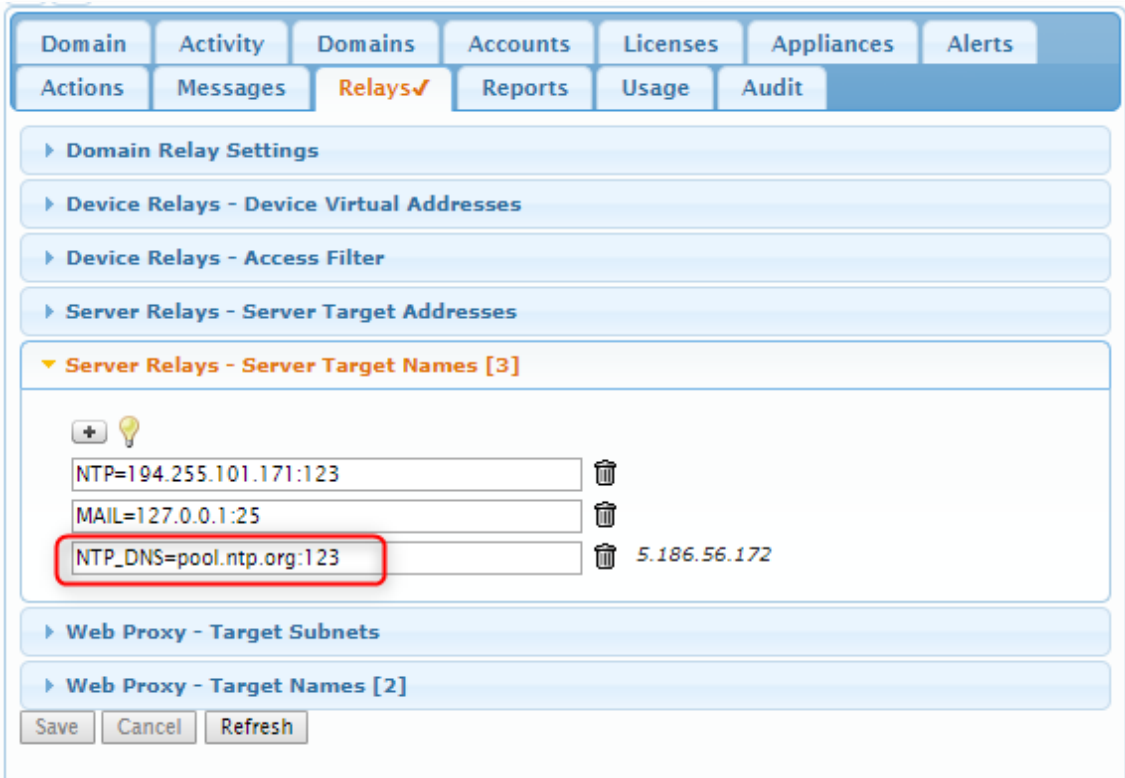


Figure 3 - Create the Server Target Name like NTP\_DNS

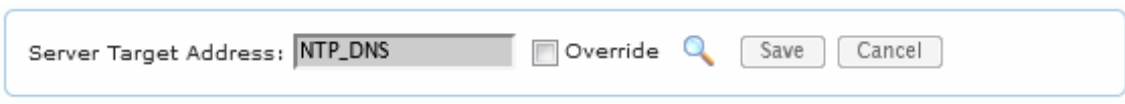


Figure 4 - Relay established with success

### Redirecting port:

If you for some reason need to redirect to, in this case port :123 to :10123, it is done on the Server Target Name like shown below. The Relay on the SiteManager is not changed like shown in Figure 1.

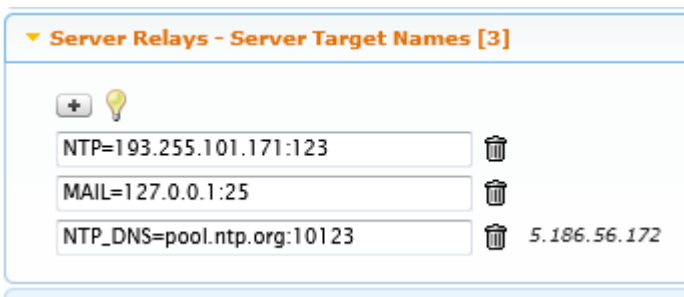


Figure 5 - redirect port

### Refreshing the IP address:

The system will, by default, resolve the DNS name every 30 minutes. This should in most cases be enough and should not be changed. If the TTL time on the DNS name is less than 30 minutes and the system need to change the IP for example every 5 minutes, it can be done by adding @5 to the Target name:

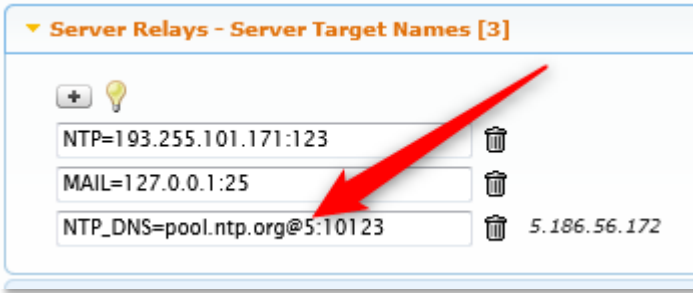
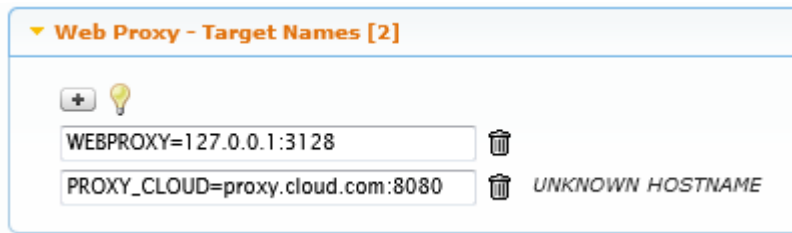


Figure 6 - add refresh interval

### 1.3. WEB Proxy – Target Names

As for Server Target Names, you can also have DNS names for the WEB Proxy Target names like shown below:



Web Proxy -Target Names relates to the web proxy that is enabled on the SiteManager – see Figure 7/below:

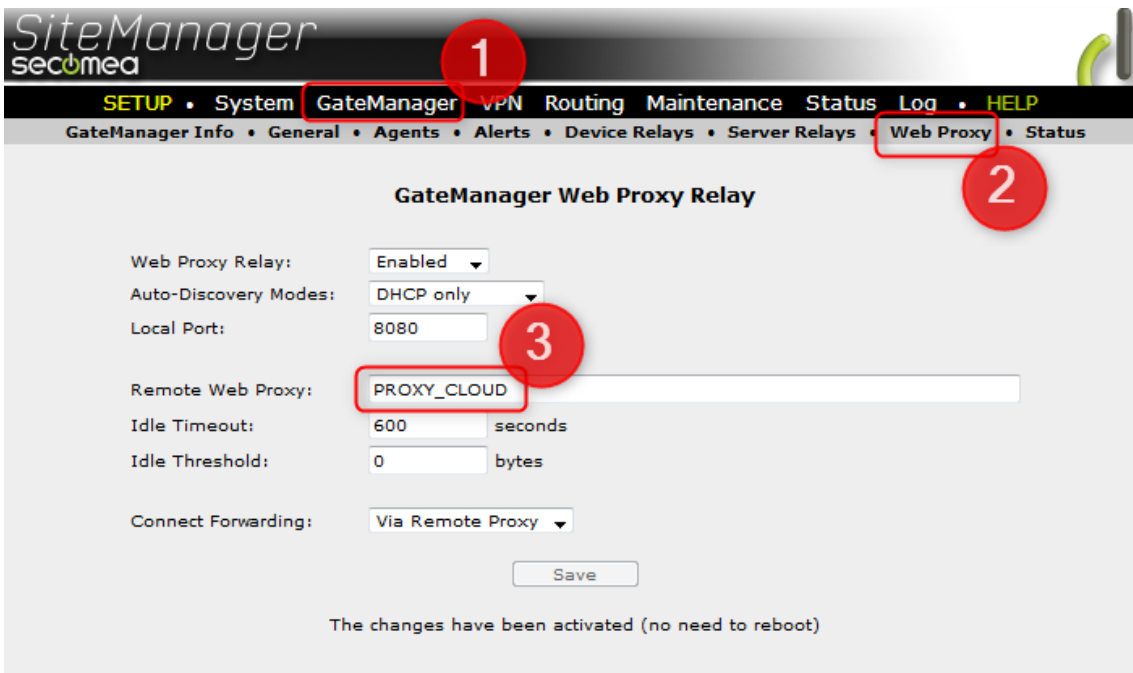


Figure 7

## 1.4. Working with Target Names

### 1.4.1. Server Administrator

To change Relay settings, you need to login as Server Administrator.

### 1.4.2. Use Local Relay Settings

Depending on your setup you might need to set the Use Local Relay Settings as shown in Figure 8.

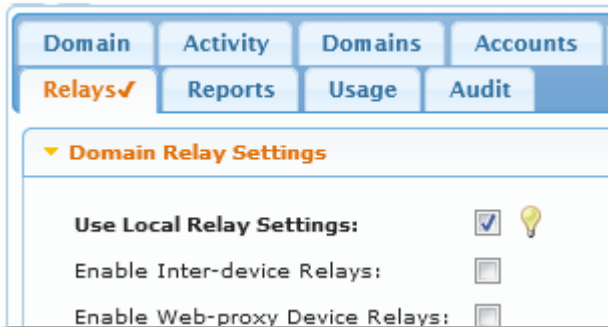


Figure 8

### 1.4.3. Timers

The default DNS refresh time is 30 minutes. This means that a DNS name like "proxy.cloud.com" is checked every 30 minutes in case the IP address changed. If the TTL time of the DNS record is 30 minutes or more there is no reason to add the retry option as shown in Figure 6. It is only in case the TTL time is less than 30 minutes.

### 1.4.4. UNKNOWN HOSTNAME

If the DNS name cannot be resolved when the Target Names is configured, it will show as "unknown hostname". Note that the system will not try to resolve the name until after 10 minutes.



Wait 10 minutes



## 2. LinkManager 8

### 2.1. GUI brush-up



Figure 9 – previous LM8 GUI

Previous LinkManager 8 representations could in some situations, where domains are name the same, get to a scenario where it could be difficult to locate the correct site. The above example show 2 sites having the same two domains called Machine and SiteManager.

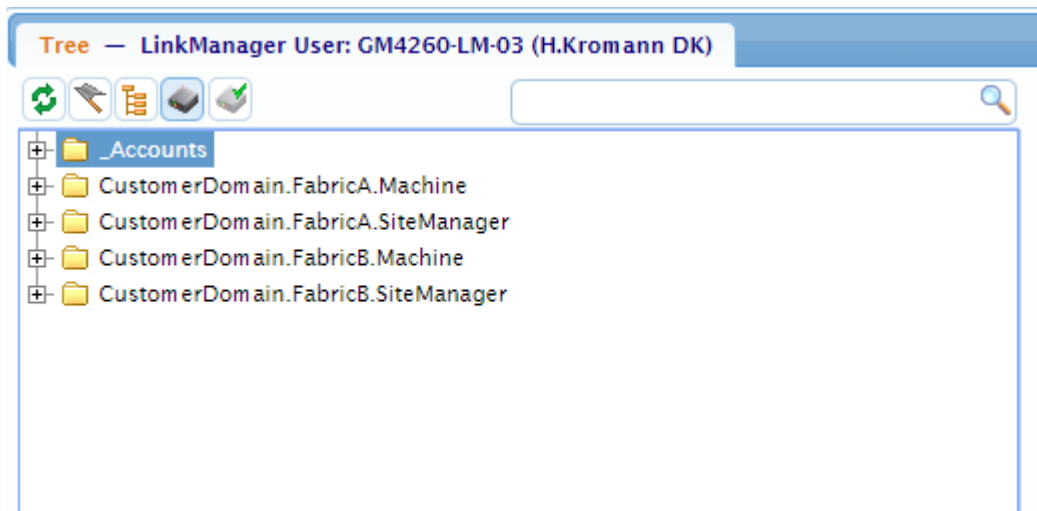


Figure 10 – New LM8 GUI (Customer Domain)

To solve the above example, LinkManager 8 includes the parent domain. In the example above, a customer domain reveals that there are actually two domains called FabricA and FabricB



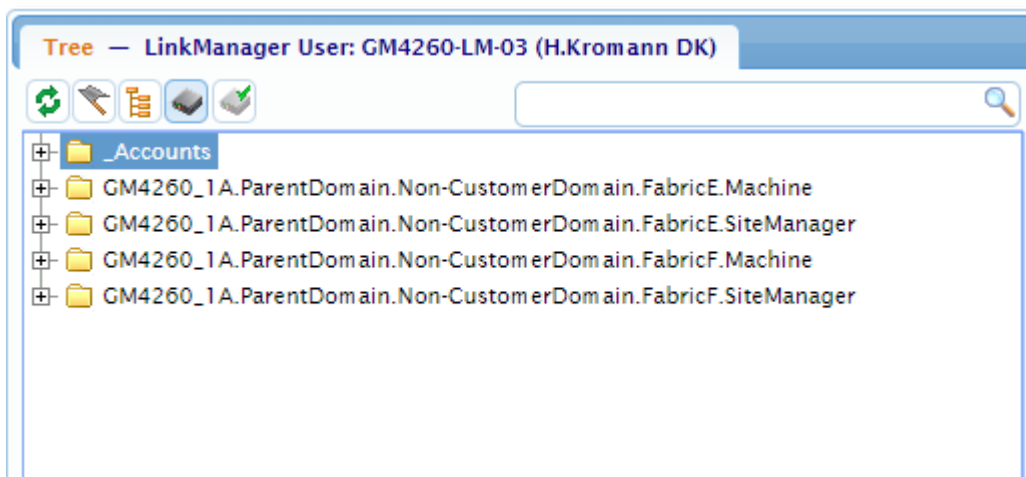


Figure 11 – New LM8 GUI (Own GateManager)

Figure 11 show the same as Figure 10 but for non-Customer domains.

## 2.2. Update of the Go To Appliance options (GTA)

New improved help bulb for various Go To Appliance options.

From Release 8.3, LinkManager 8 will be able to detect a subset of client software (as we will recall from the well-known GTA service tools in LinkManager 7). The following are currently detected:

### VNC client:

- UltraVNC ([www.uvnc.com](http://www.uvnc.com)) expected to be installed in the following default folders  
 <program files>/uvnc bvba/  
 <program files>/UltraVNC/UltraVNC/
- TightVNC ([www.tightvnc.com](http://www.tightvnc.com)) expected to be installed in:  
 <program files>/TightVNC
- RealVNC ([www.realvnc.com](http://www.realvnc.com)) expected to be installed in:  
 <program files>/RealVNC

**RDP** expects the Microsoft Remote Desktop client to be installed/available (mstsc.exe).

**SSH** expect the Putty ([www.putty.org](http://www.putty.org)) software to be installed in:  
 <program files>/PuTTY

**Telnet** will use the Putty program for telnet access, see above.

**Web Browser** will always use your default Internet browser.

### Username and password:

VNC, RDP and SSH will support Username and Password if configured in the agent (like the Desktop PC agent).

## 2.2.1. SSH

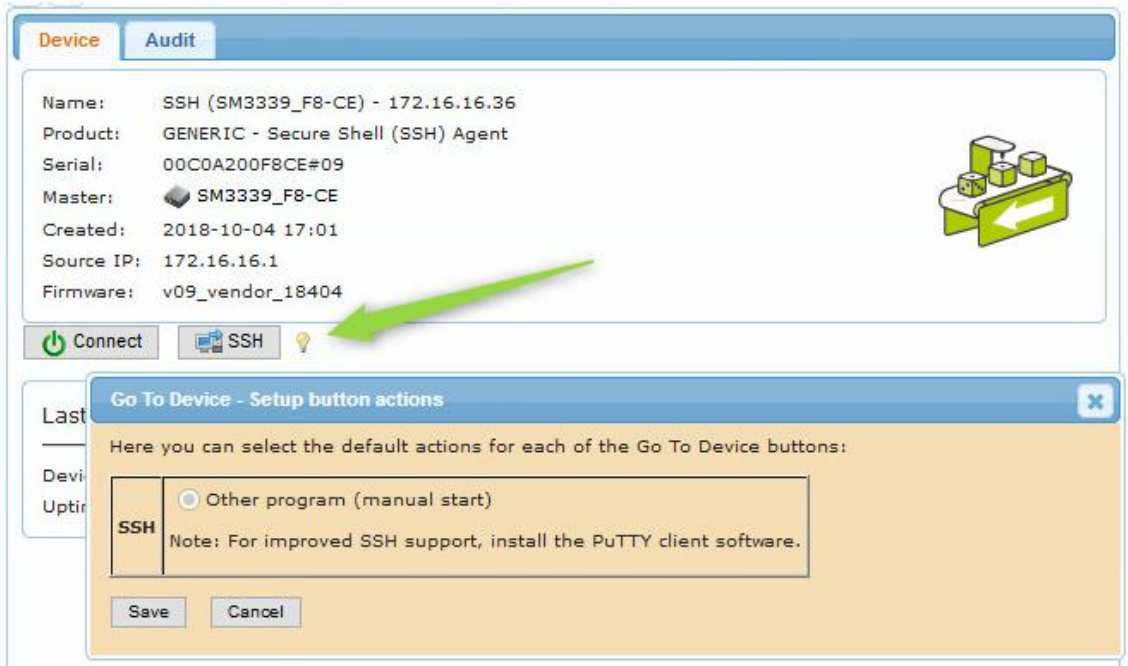


Figure 12 Putty(SSH) client not installed.

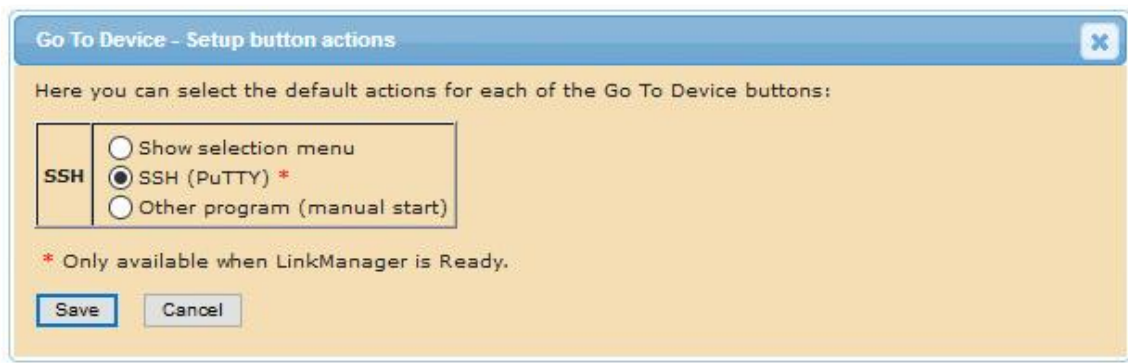


Figure 13 - Putty installed

## 2.2.2. VNC

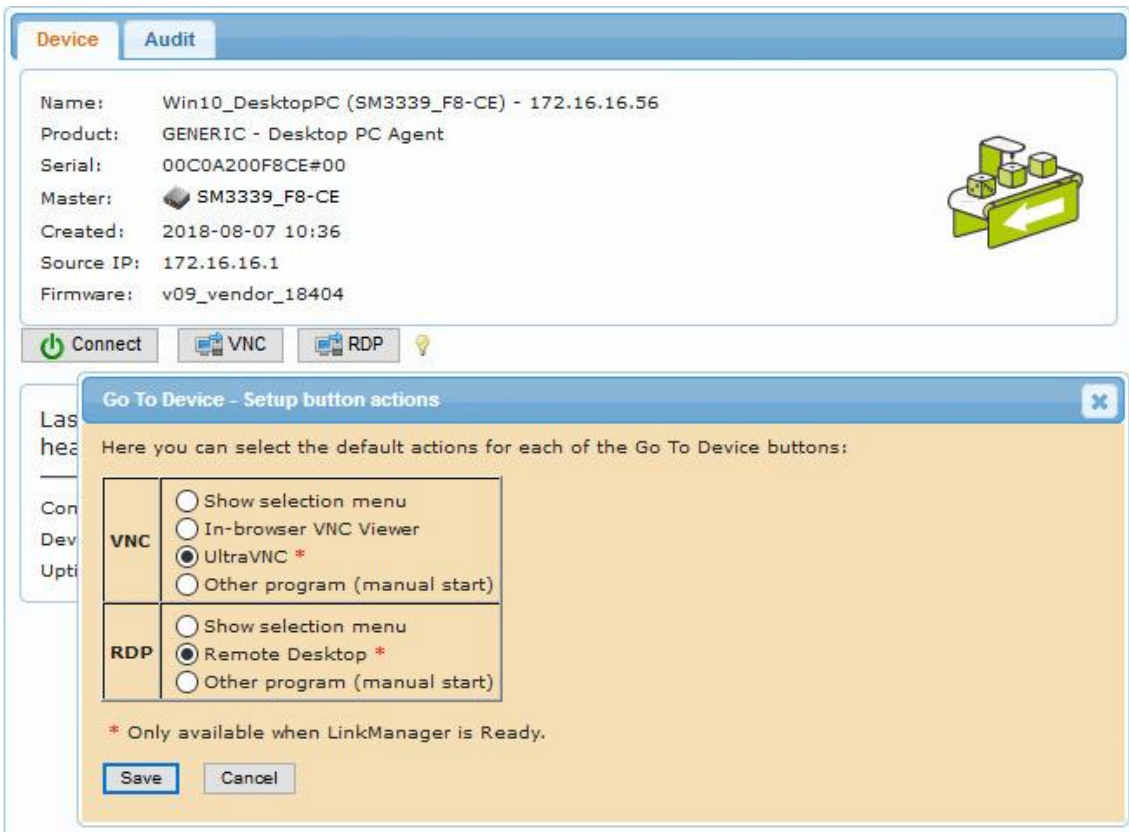


Figure 14

## 2.2.3. General

Supported services are RDP, VNC, SSH and WWW.

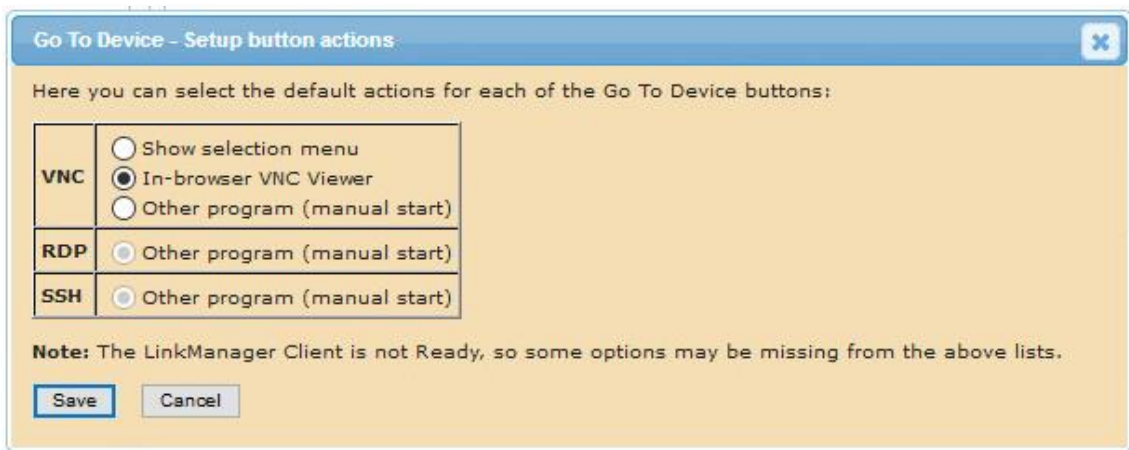


Figure 15

If LinkManager is not started, you will not have the option to launch the GTA service program automatically.

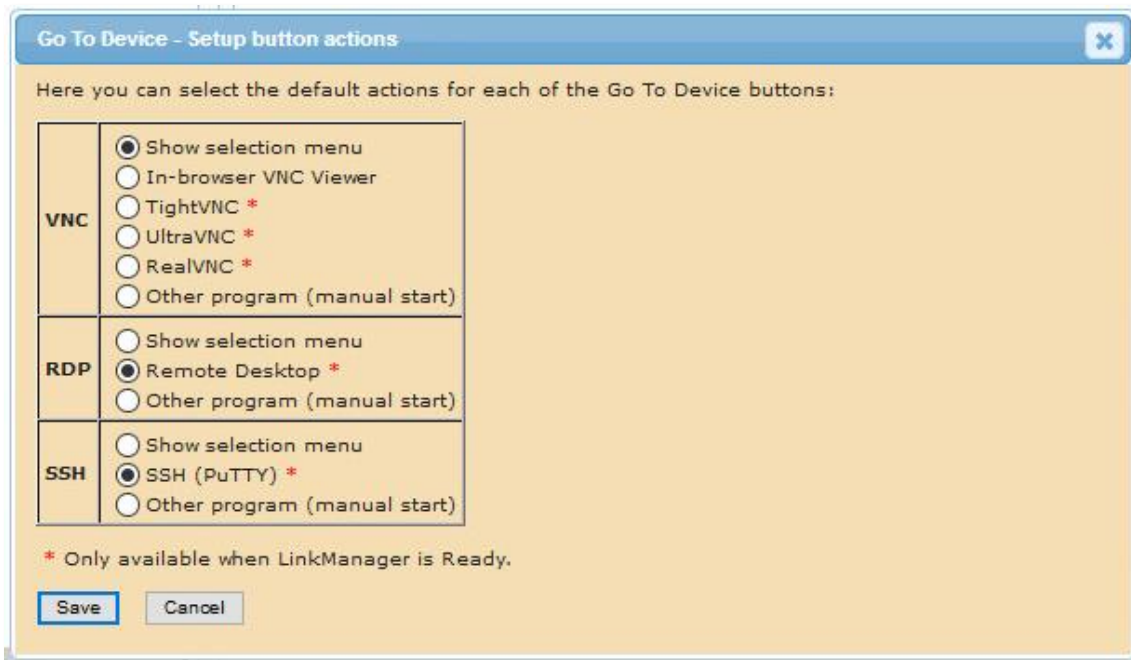


Figure 16

The system will detect if a LinkManager is running and the GTA options will expand. You can select different GTA programs of choice.



Figure 17

If you have multiple VNC clients installed, the system will detect the well-known clients and show the GTA buttons for each, see Figure 17.

---

### **2.3. About the new GTA Service**

If you have installed ex. putty but the Go To device service still show it is not detected, it might be because you need to exit the LinkManager 8 Client (TrayIcon) and let the system start it again. The GTA services are only detected during the start of LM8 Client.

The selected option is stored in the browser Cookie on the local PC, so the setting is stored across pressing F5 or logout/login.

---

### 3. **LinkManager Mobile**

There have been no major changes to LinkManager Mobile functionality in this release.

## 4. SiteManager

### 4.1. Subnet Agent added to the small SiteManager

Previously only the SiteManager 33xx supported Subnet Agent now it has been added to the SiteManager 11xx.

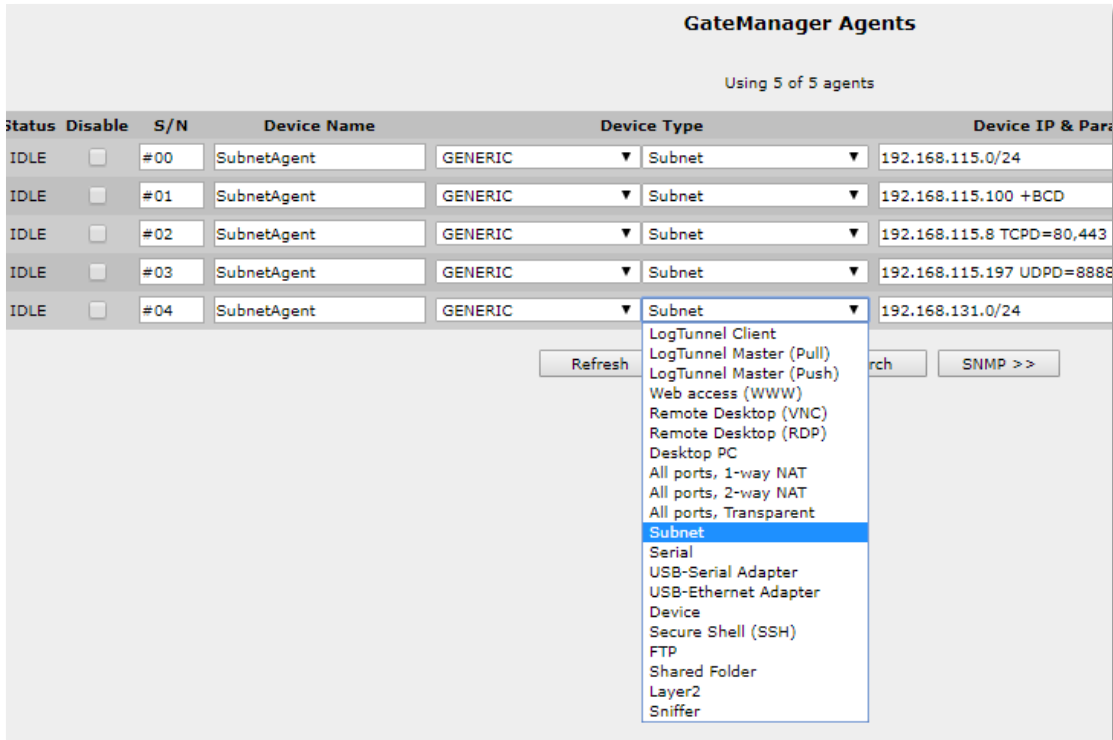


Figure 18 - Subnet Agent for all SiteManager 11xx models

### 4.2. SiteManager Embedded extended with 100 relays

From Release 8.3 both SME for Linux (v6111) and SME for Windows (v6110) will have 100 Static Server or Device Relays when using the "Extended 10 agent" license.

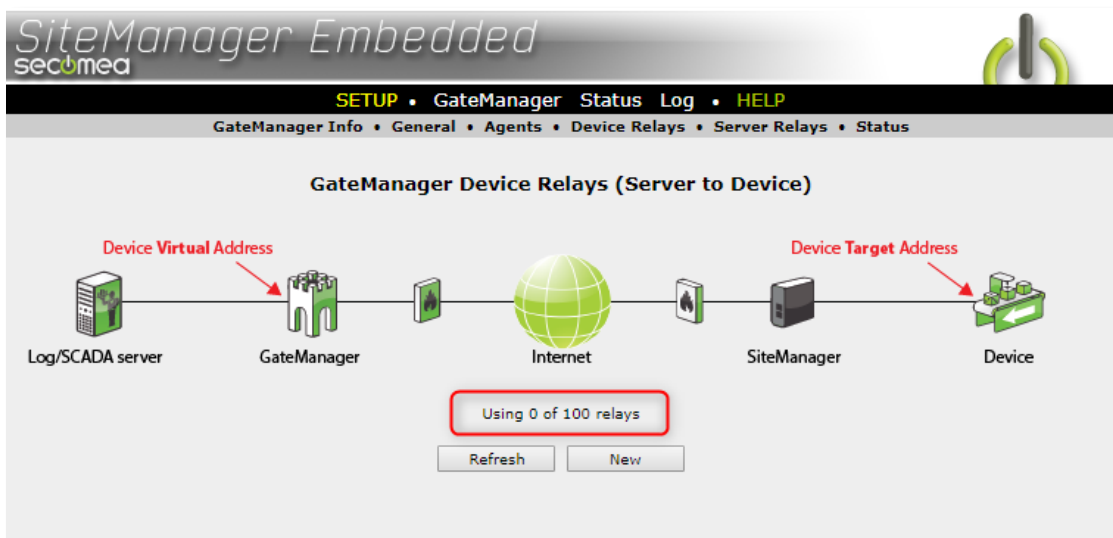


Figure 19 - 100 relays for SME

## 5. Known limitations

On the release of 8.3 we have the following known limitations.

### 5.1. Upgrading/downgrading LinkManager 8

Please note that when upgrading/downgrading LinkManager 8, the LinkManager Tray Icon should be exited, and no active connections should be running.

### 5.2. Reinstalling LinkManager 7

If for some reason you need to reinstall LinkManager 7 you also must run the LinkManager 8 installation once more.

Download and install LinkManager 8 from the Troubleshooter:

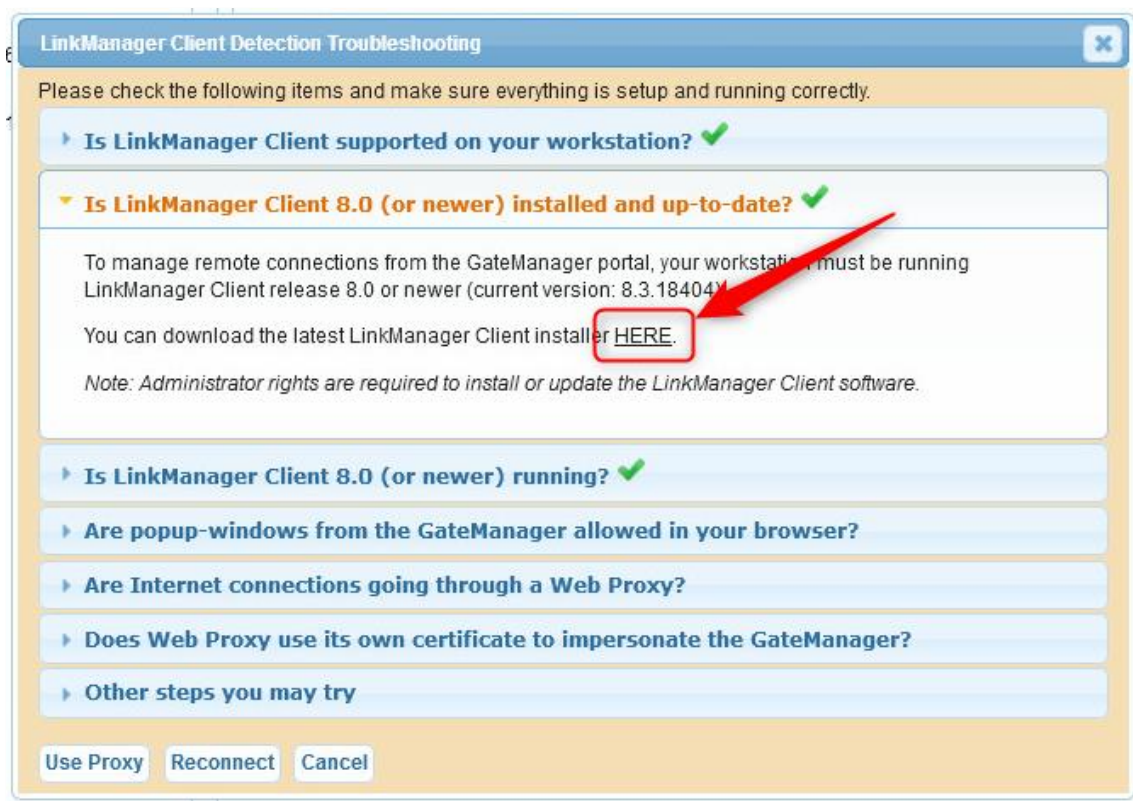


Figure 20 - how to download LinkManager 8 manually.

/end



---

Secomea A/S

Denmark

CVR No. DK31 36 60 38

Email: [support@secomea.com](mailto:support@secomea.com)

[www.secomea.com](http://www.secomea.com)