

TrustGate

Identify the ToS bits



This Quick Application Notes covers how to identify the Type of service bits set by an application - like an IP phone.

Especially when you want to set up Traffic shaping on the TrustGate to match some application on your network – but you really don't know what ToS or Precedence bits the application is using.

More information is found in the TrustGate Online help section **Appendix C**.

Version 0.92, 2008



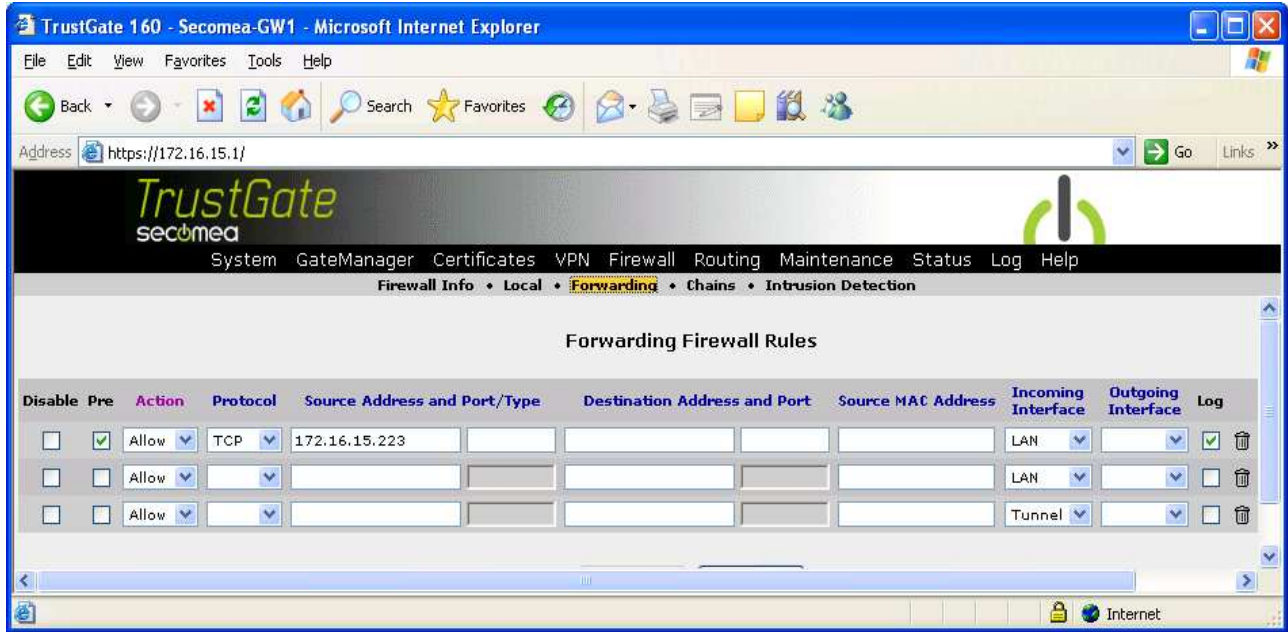
Table of Contents

1.	<u>To track the ToS and Precedence bits from the Application</u>	3
1.1.	Setup the Forwarding firewall with this Source IP and remember to check the Pre option for this rule.	3
2.	<u>The LOG > Firewall: View will show the options:</u>	3
3.	<u>Table of ToS and PREC values:</u>	4
4.	<u>Notices</u>	5

1. To track the ToS and Precedence bits from the Application

The PC or the device IP Address = 172.16.15.223

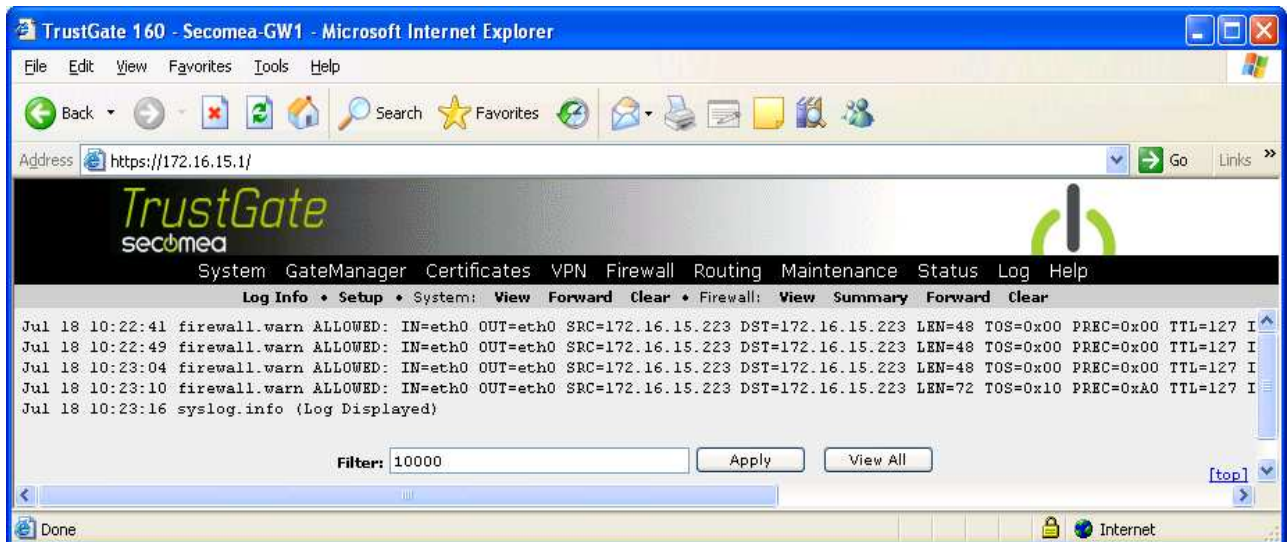
1.1. Setup the Forwarding firewall with this Source IP and remember to check the Pre option for this rule.



2. The LOG > Firewall: View will show the options:

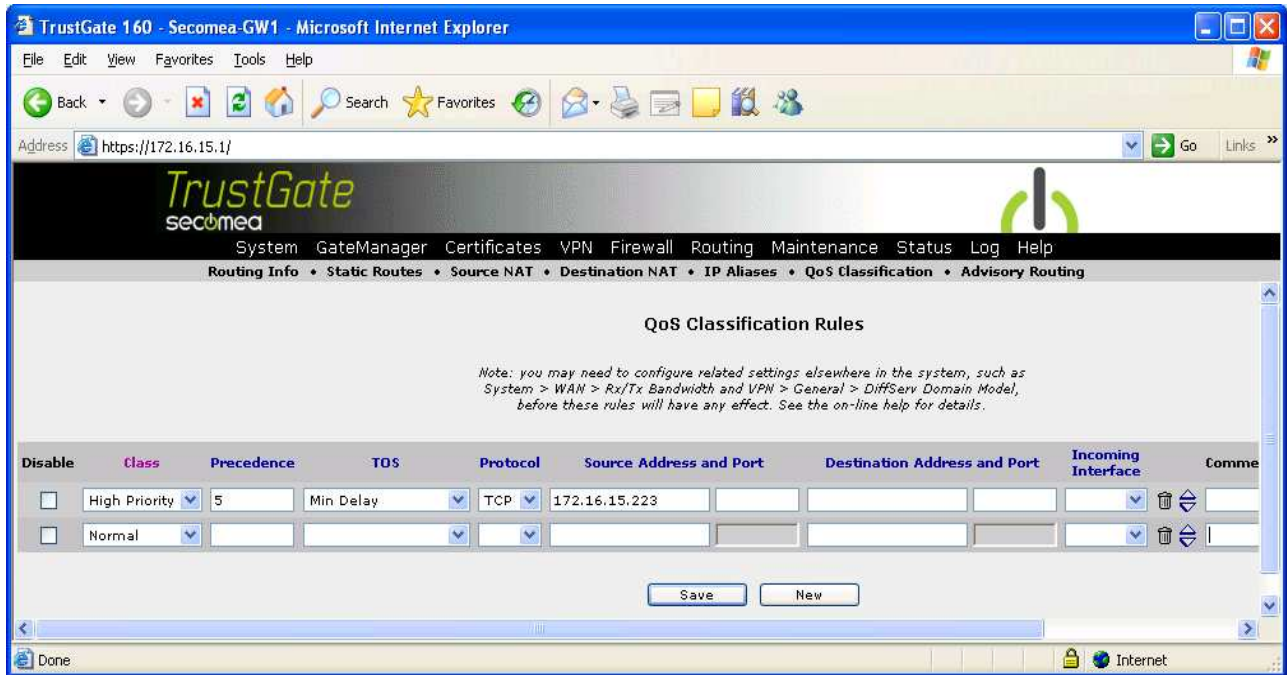
TOS= 0x10 and PREC=0xA0

This ex. is the ToS = Min Delay and Precedence = 5



Now we know that the PC application is using the QoS options Min Delay and Precedence = 5.

The Routing > QoS Classification table is set as follows:



Note:

Depending on the set up you should vary the Rule and maybe not specify the Source IP address if the rule is for all devices that uses the Precedence and ToS setting. In this ex. it is TCP that is used but it might also be UDP or any of the other known protocols.

Also note that the Firewall Log don't always log all the packets so you might need to make several try to make the system dump a entry in the firewall log. It is the intension not to log all packets to prevent overloading the system.

3. Table of ToS and PREC values:

Value in Firewall Log TOS to use in the QoS Classification Rules Tabel.

0x00	Blank
0x10	Min Delay
0x08	Max Throughput
0x04	High Reliability
0x02	low Cost
0x10+0x08=0x18	MinD+MaxT

....

Value in Firewall Log Precedence to use in the QoS Classification Rules Tabel

0x20	1
0x40	2
0x60	3
0x80	4
0xA0	5
0xC0	6
0xE0	7

4. Notices

Publication and copyright

Identify the ToS Bits, version 0.92, 2008-07-18

© **Copyright Secomea A/S 2008**. All rights reserved. You may download and print a copy for your own use. As a high-level administrator, you may use whatever you like from contents of this document to create your own instructions for deploying our products. Otherwise, no part of this document may be copied or reproduced in any way, without the written consent of Secomea A/S. We would appreciate getting a copy of the material you produce in order to make our own material better and – if you give us permission – to inspire other users.

Emission Notices and Agency Compliance

- EMI/EMC: All interfaces intended for external connections are protected against emissions.
- EU: CE Marking EN 55022 Class A, CE Marking EN55024
- USA: FCC Part 15 Class A

Trademarks

GateManager™ and SiteManager™ are trademarks of Secomea A/S. Other trademarks are the property of their respective owners.

Disclaimer

Secomea A/S reserves the right to make changes to this publication and to the products described herein without notice. The publication of this document does not represent a commitment on the part of Secomea A/S. Considerable effort has been made to ensure that this publication is free of inaccuracies and omissions but we can not guarantee that there are none.

The following paragraph does not apply to any country or state where such provisions are inconsistent with local law:

SECOMEA A/S PROVIDES THIS PUBLICATION "AS IS" WITHOUT WARRANTY OF ANY KIND, EITHER EXPRESS OR IMPLIED, INCLUDING, BUT NOT LIMITED TO, THE IMPLIED WARRANTIES OF MERCHANTABILITY OR FITNESS FOR A PARTICULAR PURPOSE

SECOMEA A/S SHALL NOT BE LIABLE FOR ANY DIRECT, INDIRECT, INCIDENTAL, CONSEQUENTIAL, OR OTHER DAMAGE ALLEGED IN CONNECTION WITH THE FURNISHING OR USE OF THIS INFORMATION.